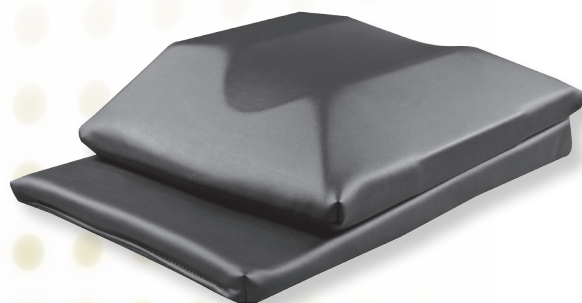
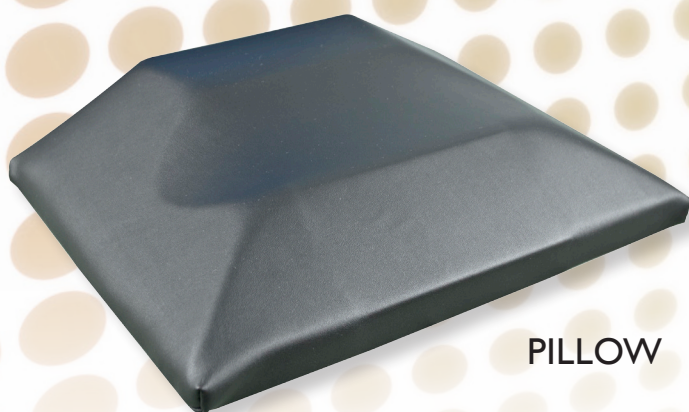


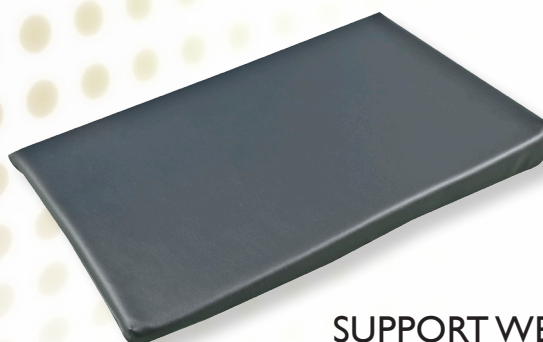
INTERVENTIONAL SUPINE PILLOW SYSTEM



- *Supports patient's neck in a position of comfort to reduce muscle spasm*
- *Secures the cervical spine in either neutral or rotation*
- *Creates an unobstructed working space for physicians' hands*
- *Fully adjustable for both patient and physician needs*



PILLOW

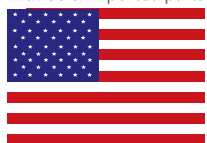


SUPPORT WEDGE



FM584901

made in the USA
with US & imported parts



OAKWORKS[®]
MEDICAL
Position for Success

INTERVENTIONAL SUPINE PILLOW SYSTEM #69808-T01 **FDA LISTED**

Primarily designed to facilitate cervical transforaminal injections, but useful for other antero-lateral procedures such as facet injections, medial branch blocks, stellate ganglion blocks, scalene injections, brachial plexus blocks and discography.



- Head easily rotates to the opposite side of the injection with comfortable support of the ear and occiput. The dual resistive foam is designed to resist roll back.
- The slightly raised position and beveled sides create a supportive yet unobstructed working space for the physician's hands.
- Relaxed cervical musculature from continuous contact with the neck and upper thoracic spine.

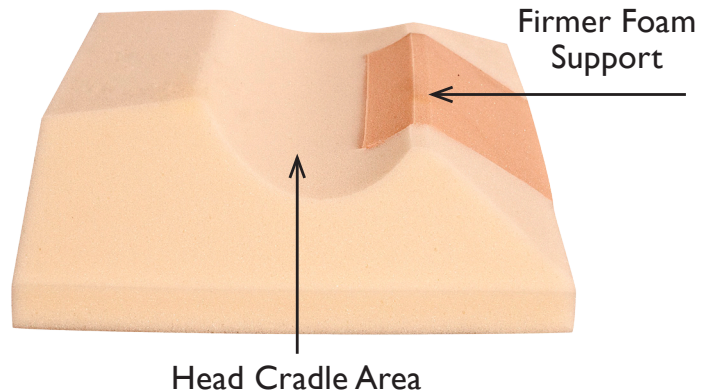


- Reversible for left or right procedures.
- Tapered support wedge can raise or angle the pillow to better fit the patient's habitus, reduce muscle spasm, modify cervical flexion and allow for appropriate target visualization.



raising head to increase cervical flexion

increasing rotation with offset wedge



- Highly radiolucent design for optimal imaging.
- Easily cleaned, reusable design.

CONTACT:

View our full line of
Medical products



#72703

Scan this code with your smart phone



717.235.6807 www.oakworksmed.com email: customerservice@oakworks.com